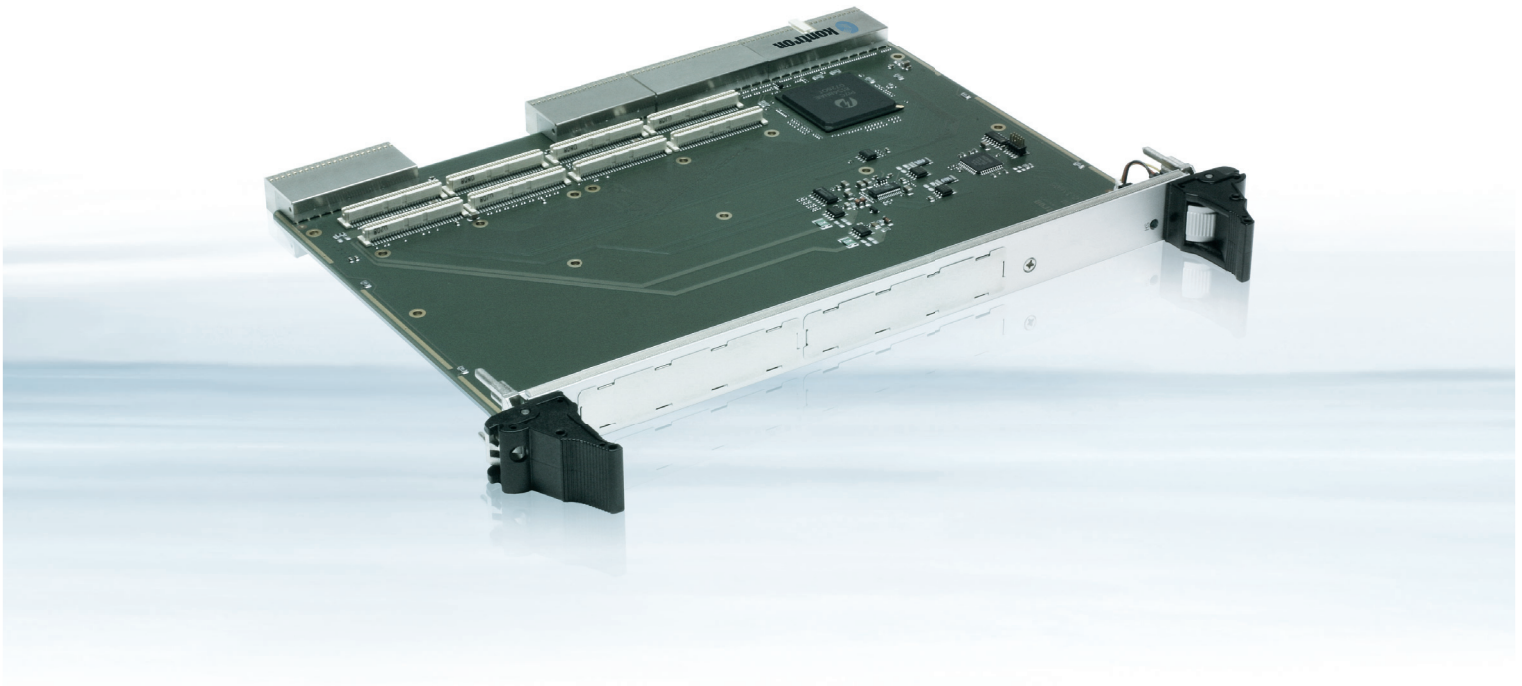


CP690



6U CompactPCI® CARRIER BOARD FOR 2 PMC MODULES

- ▶ interface flexibility through a wide range of analog, digital, communication and counter PMC modules.
- ▶ 66 or 33 MHz on PCI and/or PMC
- ▶ 64 bit bus master and PMC interface
- ▶ Rear I/O on Pn4
- ▶ INT A, B, C, D support

CP690

6U CompactPCI® CARRIER BOARD FOR 2 PMC MODULES

The CP690 was created to provide system designers with a host for mounting the wide range of PMC modules available on the open market.

The CP690, which carries two PMC modules, has been designed to enable the user to take full advantage of the cost-effective solutions afforded by industrial PMC modules. Use of the 6U CP690 provides the opportunity to utilize any two PMC modules simultaneously. This feature maximizes flexibility and versatility, enabling

the operator to tailor the CP690 to meet precisely his specific input/output requirement. Kontron's CP690 is completely softwaretransparent and therefore no driver is required to manage data transfer between the PMC module and the CPCI bus.

On this 6U carrier board you have the possibility to enable Rear I/O on the Pn4 connector of the PMC module. The upper PMC module is connected to J5 of the CPCI bus and the lower PMC module is connected to J3 of the CPCI bus.

TECHNICAL INFORMATION

CompactPCI® INTERFACE		64 and 32 bit / 66 and 33 MHz, Compact PCI® specification v.2.1 compatible with busmaster DMA, interrupt level INT A, B, C, D support, 3.3 V/5.0 V operation Rear I/O on P3 (lower PMC) and P5 (upper PMC)
PMC CARRIER INTERFACE		Compatible with P1386 specification v. 2.0, 64 and 32-bit / 66 MHz 3.3 V / 33 MHz 3.3 V, configurable to 5 V Interrupt level INT A, B, C, D routed directly to Compact PCI Rear I/O on Pn4
SOFTWARE SUPPORT		Depends on PMC module
GENERAL	FRONT-PANEL POWER CONSUMPTION DIMENSIONS TEMPERATURE RANGES OPERATING HUMIDITY WEIGHT MTBF	2 cutouts for PMC module 0.2 Watt without a PMC module 6 U/4 HP (233 x 160 mm) 0° C to + 60° C (standard) -25° C to +75° C (extended) -55° C to +85° C (storage) 0 % to 95 % (non-condensing) 280 g 416.000 h

ORDERING INFORMATION

ARTICLE	DESCRIPTION
CP690-33	32/64 bit, 33 MHz, 5.0 VI/O, 6U dual PMC carrier board with Rear I/O on J3/J5
CP690-66	64 bit, 66 MHz, 3.3 VI/O, 6U dual PMC carrier board with Rear I/O on J3/J5
CP-RI06-90	4HP Rear I/O Modul for CP690. Rear Panel: 2x PIM Support

CORPORATE OFFICES

EUROPE, MIDDLE EAST & AFRICA

Lise-Meitner-Str. 3-5
86156 Augsburg
Germany
Tel.: + 49 821 4086 0
Fax: + 49 821 4086 111
info@kontron.com

NORTH AMERICA

14118 Stowe Drive
Poway, CA 92064-7147
USA
Tel.: + 1 888 294 4558
Fax: + 1 858 677 0898
info@us.kontron.com

ASIA PACIFIC

1-2F, 10 Building, No. 8 Liangshuihe 2nd Street,
Economical & Technological Development Zone,
Beijing, 100176, P.R.China
Tel.: +86 10 63751188
Fax: +86 10 83682438
info@kontron.cn