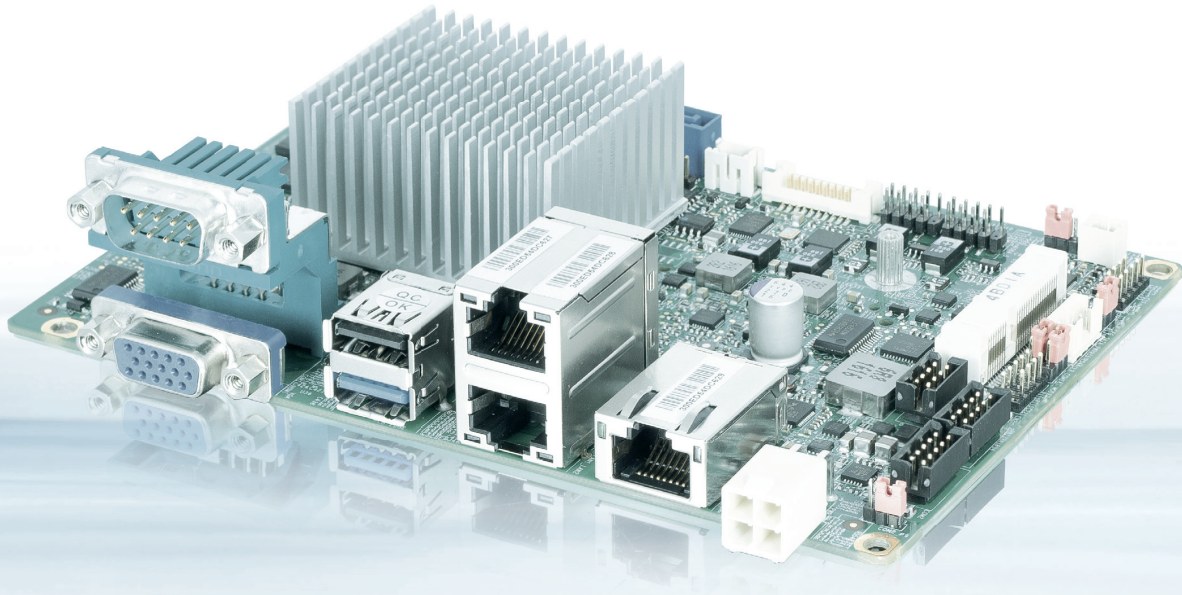


# 3.5-SBC-E38

---



## 3.5" EMBEDDED MOTHERBOARD WITH INTEL® ATOM™ E3815 CPUS

- ▶ Intel® Atom™ E3815 (1 core), TDP: 5 W
- ▶ mPCIe Half size, CFast Card and 3x RJ-45 LAN Port
- ▶ Soldered down 1 GByte DDR3L-1067 Memory
- ▶ LVDS 18/24 Bits dual channel, VGA/HDMI co-layout design
- ▶ Wide range 19-36 V DC input

POSSIBILITIES START HERE



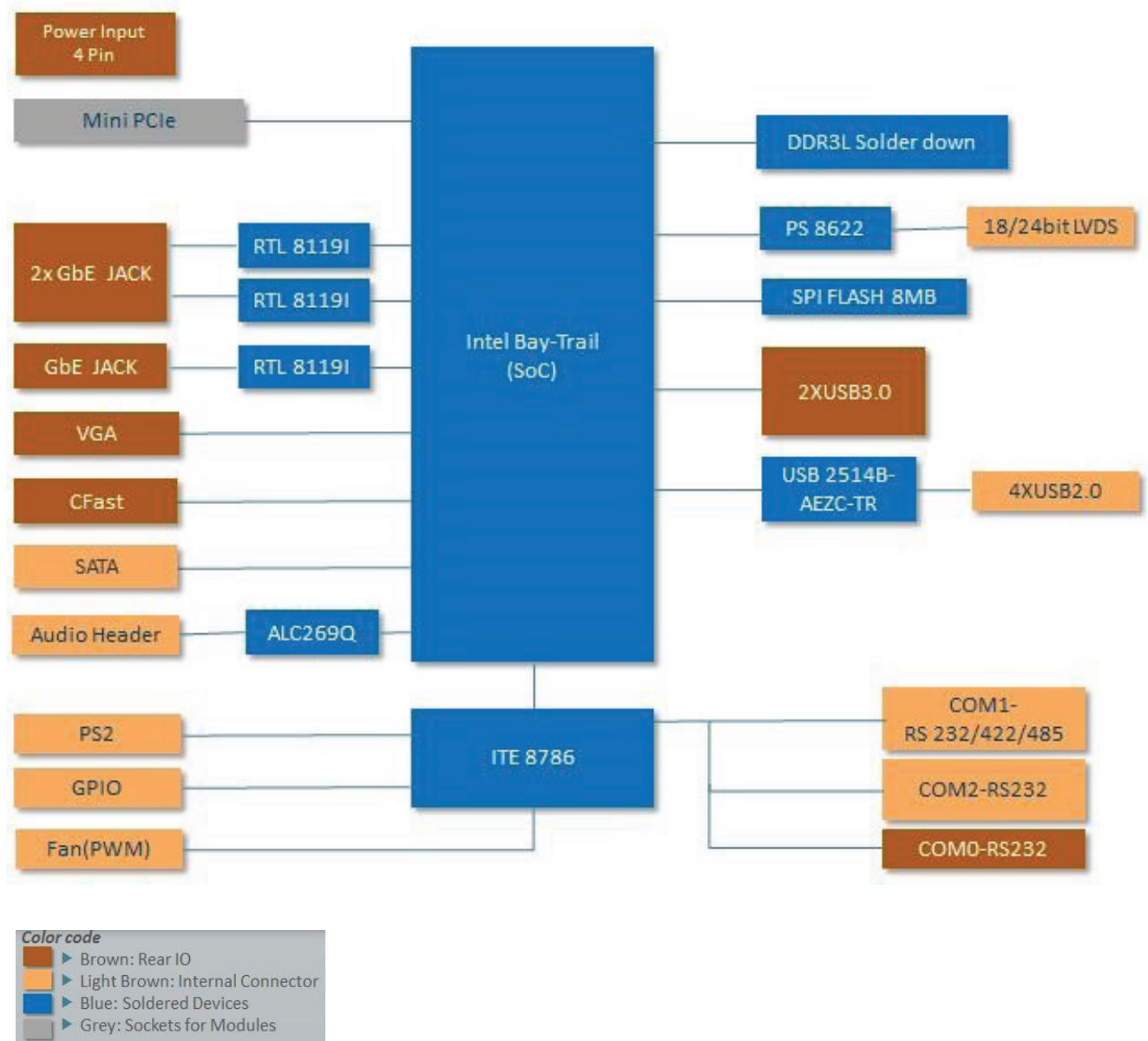
### 3.5-SBC-E38

#### Typical Applications

- ▶ POS/POI: Higher Graphics and CPU core performance, Low power, multi display support
- ▶ Medical/Connectivity: Higher Graphics and CPU core performance, longevity
- ▶ Industrial Automation: Wide range of I/Os, compact size, longevity
- ▶ Digital signage: Multi display support, low power, wide range of I/Os
- ▶ Future-oriented Devices: Display Port and LVDS, low power, compact size

The 3.5-SBC-APL is part of the Security Solution Product Line the Single Board Computer is prepared for Application Protection, License Creation, Delivery, Management and Tracking, Implementation of license models as well as the assignment of privileges and access levels.

#### ▶ BLOCK DIAGRAM BAY-TRAIL 3.5" SBC



## ► TECHNICAL INFORMATION

PROCESSOR	Intel® Atom™ E3815
MEMORY	Solder down 1 GByte, Support DDR3L
GRAPHICS INTERFACE	2x Independent Displays (1x VGA/HDMI, 1x LVDS)
SPECIAL	CFast Card Support
SATA PORTS	1x SATA Gen 2.0
mPCIe SLOT	1x Mini-PCIe (Half size) expansion
SERIAL PORTS	1x RS-232 (External), 1x RS-232 (Internal), 1x RS422/485 (Internal) select by BIOS
LAN PORTS	3x RJ-45 LAN Port (with Transformer & 2 LED indicators)
USB PORTS	1x USB 3.0 (Rear) + 1x USB 2.0 (Rear), 4x USB 2.0 (Internal)
AUDIO	HD Analog audio interface (Line-In/Line-Out/Mic-In)
POWER SUPPLY	19-36 VDC + 4pin (Internal Input Power)
MTBF	tbd
SAFETY	IEC 60950-1: 2005
COOLING SOLUTIONS	Passive and active cooling solutions
OPERATING TEMPERATURE	0 °C to 60 °C
REGULATORY	Comply with Emission: EN55022
DIMENSIONS	3.5" , 146 x 102 mm
OPERATING SYSTEMS	Win7, WEC 7, Linux
BIOS	AMI Aptio V UEFI

## ► ORDERING INFORMATION

ARTICLE	PART NO.	DESCRIPTION
3.5-SBC-E38 BOARD	43010-1000-14-1	3.5-SBC-E38 E3815 1.46 GHz, 1 GByte Memory onboard, w. cooler

## ► GLOBAL HEADQUARTERS

### KONTRON S&T AG

Lise-Meitner-Str. 3-5  
86156 Augsburg, Germany  
Tel.: + 49 821 4086 0  
Fax: + 49 821 4086 111  
info@kontron.com  
[www.kontron.com](http://www.kontron.com)